



# Kane`ohe Community Family Center (KCFC) Family Center News

*A partnership of Parents and Children Together and the Castle Complex Department of Education,  
partially funded by Aloha United Way, the State of Hawaii Health and Human Services Departments, Keiki O Ka Aina, Inc.,  
the U.S. Department of Education Office of Innovation and Improvement, Parent Options and Information, HCDCH and Hawaii Community Foundation.*

Vol. 10. No. 6

June 2004

E-mail us at:  
kfcf@pacthawaii.org  
Website:  
<http://kfcf.pacthawaii.org>



*The Kane`ohe Community Family Center will facilitate the strengthening of families and communities from Kane`ohe to Kualoa  
by enabling them to identify and use their own and other resources to improve their quality of life and sense of community.*

## Fun Summer Activities



School is out! What are your children doing? Here are some fun activities for you and your family to do this summer:

- **Visit the Library:** Children may participate in read-alouds, storytelling, fingerplays, summer reading programs, rhymes, and songs. Many public libraries also offer training courses for children in using different software or educational programs.
- **Discover Geography:** Encourage children to learn more about your hometown. Read stories or sing songs together that teach about geography. Pick a place you and your child would like to go and plan the excursion together.
- **Nature's Best:** Older children can track the weather of cities around the world. They could also camp out in the back yard, and parents could create a treasure map for children to find hidden treats in the yard.
- **Use Community Resources:** Keep a lookout for free outdoor fairs or music festivals in your community. People are excellent resources too - "collectors, painters, and backyard naturalists may live in your neighborhood, eager to share their knowledge with children."
- **Rainy Day Activities:** Together, prepare an indoor picnic or cook dinner together.

Be creative and have fun this summer. Help make this summer memorable and educational for your children.

<http://www.kidsource.com/kidsource/content4/summer.activities.html>

## Volunteers Needed!

**Kane`ohe Day on the Bay 2004**

**Saturday, July 24, 2004**

**10 AM - 3 PM.**

**Camp Kokokahi YWCA-  
45-035 Kane`ohe Bay Drive**

### Help needed in the following areas:

- ❖ Event set-up and clean-up.
- ❖ Parking and traffic control.
- ❖ Event information booth.
- ❖ Stage hands and entertainment assistants.
- ❖ Craft fair and resource fair assistants.
- ❖ Hospitality and volunteer room coordinators.
- ❖ Family activities, water sports, and Xtreme fun ride assistants.

We are also looking for anyone who is interested in providing entertainment or having a craft booth.

**To volunteer or for more information, please contact the  
Kaneohe Community Family Center @ 235-7747.**



Friends of the Windward Community College Library are looking for book donations for a Used Book Sale as part of the Windward Ho`olaule`a. Donations can be dropped off at the WCC Library.

**For more information, contact Brian Richardson at  
[richards@hawaii.edu](mailto:richards@hawaii.edu) or 235-7338.**

The Staff Development Committee at WCC is looking for any white elephant items for their White Elephant Sale at the Ho`olaule`a.

**If you want to make a donation, please contact Wei-ling  
Landers at [weiling@hawaii.edu](mailto:weiling@hawaii.edu) or 236-9283.**

## Kane`ohe Community Family Center

### COMMUNITY RESOURCE AND REFERRAL

•Phone 235-7747

•Website <http://kcfc.pacthawaii.org>

### HAWAII PARENTAL INFORMATION AND RESOURCE CENTER (HPIRC)

<http://www.hawaiiipirc.org>

•Parenting Classes

•Family Fun Activities

•Home Instruction For Parents of Preschool Youngsters (HIPPY)

### FAMILY LITERACY PROGRAMS

•Kulana Nani

### SUPPORT AND SELF-HELP GROUPS

•Na Tutu - Grandparents Raising Grandchildren

Coalition and Support Group

### NEIGHBOR-2-NEIGHBOR

•Ko`olau Village

•Kulana Nani

### VOLUNTEER & COMMUNITY SERVICE LEARNING OPPORTUNITIES

•Family Activity

Night Assistants

•Neighbor-2-Neighbor Mentors

•Reading/Homework Tutors

•Clerical and Program Support

•Special Event Child Care



## Volunteers Needed!

Help needed to assist with arts and crafts activities, maintain the lending library, and interact with elementary school aged children at our afterschool program at Kulana Nani Apartments.

Thursdays from 2:30 - 4:30

To volunteer or for more information, please contact Leilani at 235-7747.



## Writers' Retreat

Saturday, June 5, 2004

9:30 a.m. - 2:00 p.m.

Bring writing materials, sack lunch, mug for coffee or tea and snacks to share.

Windward Community College  
(45-720 Kea`ahala Road),  
Hale Na`auao Lounge

Please call 235-7433 for more information and pre-registration (Maximum of 45 people).



## Kaneohe Library Storytimes

Preschool - Tuesdays

Ages 3-5 years

10:15 a.m.

June 15th, 22nd and 29th

Toddlers - Thursdays

Ages 18 months - 3 years

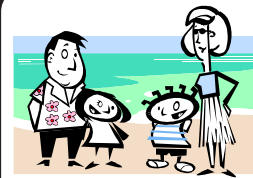
10:15 a.m.

June 17th and 24th

Call 233-5676 for more information.



KCFC would like to thank Regina Yoshimori and the Castle High School students for folding the newsletters this month. We really appreciate all of your time and effort!



# June

- 5th Writers' Retreat** 9:30 a.m. - 2:00 p.m. WCC. Please see ad on this page for more information.
- 7th Community Works in 96744** 5:30 p.m. Queen Lili`uokalani Children's Center 235-7747
- 10th OGYA Grief Support Group for Children, Teens & Family** 6 - 8 p.m. Queen Lili`uokalani Children's Center. Cynthia White 735-2989.
- 11th King Kamehameha I Day**
- 15th Preschool Storytime** 10:15 a.m., repeats - June 22nd and 29th. Please see ad on this page for more information.
- 16th KCFC Science Family Activity** 5:30 - 7:00 p.m. Windward Mall Center Court area 235-7747.
- 16th Grandparents Raising Grandchildren** 9 a.m. Queen Lili`uokalani Children's Center - Kane`ohe. All grandparents are welcome. Bernie 235-7613.
- 17th Toddler Storytime** 10:15 a.m., repeats - June 24th. Please see ad on this page for more information.
- 17th Kane`ohe Neighborhood Board** 7 p.m. WCC 523-4815.
- 20th Father's Day!**
- 24th OGYA Grief Support Group for Children, Teens & Family** 6 - 8 p.m. Queen Lili`uokalani Children's Center. Cynthia White 735-2989.

Sponsoring a free or low cost event that may be of interest to Kane`ohe families? Submit information for the KCFC calendar by the 15th of each month. Fax 235-7748. [kcfc@pacthawaii.org](mailto:kcfc@pacthawaii.org)

The *Family Center News* is printed monthly by the Kane`ohe Community Family Center (KCFC), a program of Parents and Children Together (PACT).

Please direct questions, comments and suggestions to:

The Kane`ohe Community Family Center,

He`eia Elementary School,  
46-202 Haiku Rd., Portable #2,  
Kane`ohe, HI 96744

Ph. 235-7747 Fax 235-7748

E-mail: [kcfc@pacthawaii.org](mailto:kcfc@pacthawaii.org)

KCFC Staff:

Helenann Lauber, *Family Center Dir.*  
Gordon Miyamoto, *Site Coordinator*  
Jolene Chang, *Administrative Assistant*  
Sunshine Michael, *HIPPY Coordinator*  
Jennifer Bui, *Program Facilitator*  
Serena Trehern, *Activities Specialist*  
Jennifer Chun, *HIPPY Home Visitor*  
Leilani Roth, *HIPPY Home Visitor/VISTA*  
Jeffrie Wagner, *Program Coordinator*  
Holland Henderson, *Group Facilitator*

## Site of the Month

[www.playhousedisney.com](http://www.playhousedisney.com)



A great website for kids filled with great games and interactive activities!