



PACT's Kane`ohe Community Family Center (KCFC) Family Center News

E-mail us at:
kcfc@pacthawaii.org
Website:
<http://kcfc.pacthawaii.org>



Vol. 14, No. 9

September 2008

The Kane`ohe Community Family Center will facilitate the strengthening of families and communities from Kane`ohe to Kualoa by enabling them to identify and use their own and other resources to improve their quality of life and sense of community.



Five Rs
96744

Be a part of the 5Rs Ohana that makes 96744 a unique place to live and raise our keiki!

The Five Rs (respect, responsibility, resourcefulness, relationships, resiliency) are being put into action throughout our 96744 community. The Castle Complex Schools use the 5Rs in their character education curriculum, the Department of Parks & Recreation incorporate 5Rs into their programs, and sports leagues post 5Rs banners proudly at practices and games. Our keiki are being taught to know and live the 5Rs at school, home and at play.

What are the Five Rs?

Respect Honoring one's self, others, the environment and authority.

Use positive words and actions, treat others like you would like to be treated.

Responsibility Taking ownership of one's actions, obligations and commitments.

Be on time, be truthful, keep your word, follow rules.

Resourcefulness Being skilled and imaginative in finding ways to succeed.

Ask for help; use good judgment.

Relationships Valuing the benefit of working and playing together.

Help others in need and work together; volunteer in the community.

Resiliency Adapting and striving for positive outcomes in adverse situations.

Have a positive, stick-to-it attitude; identify with a positive role model.

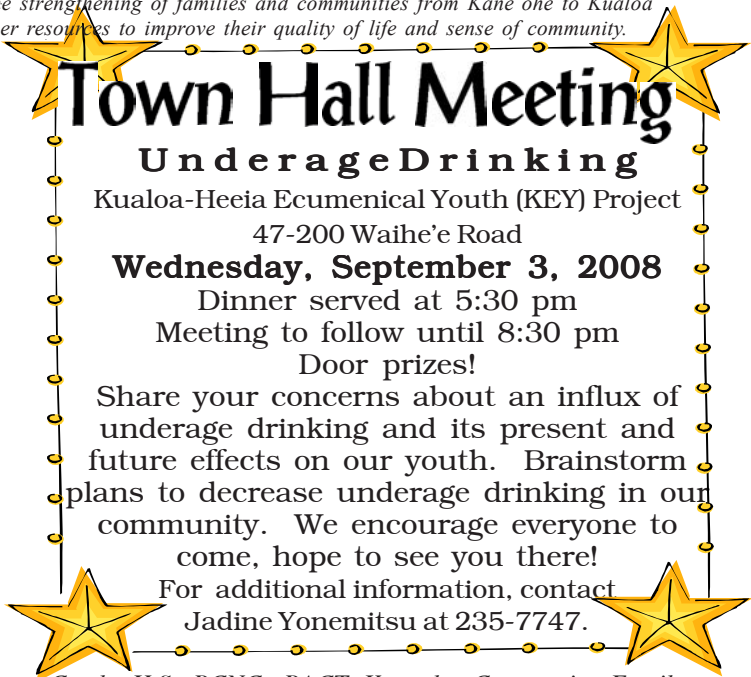
As educators, businesspersons, pastors, college students, coaches, community members and parents, we can be a part of perpetuating a positive and healthy lifestyle by living the 5Rs and being great examples to our keiki.

How can you get involved? It's easy!

Know, Live and Teach the 5Rs!

Visit our website: <http://www.hawaii5Rs.org>

For more information, contact Jadine Yonemitsu at 235-7747.



Town Hall Meeting

Underage Drinking

Kualoa-Heeia Ecumenical Youth (KEY) Project

47-200 Waihe'e Road

Wednesday, September 3, 2008

Dinner served at 5:30 pm

Meeting to follow until 8:30 pm

Door prizes!

Share your concerns about an influx of underage drinking and its present and future effects on our youth. Brainstorm plans to decrease underage drinking in our community. We encourage everyone to come, hope to see you there!

For additional information, contact
Jadine Yonemitsu at 235-7747.

Castle H.S. PCNC, PACT Kaneohe Community Family Center and Community Works 96744 sponsoring;

Drugs of Abuse: How to Identify Illegal Drugs and Paraphernalia

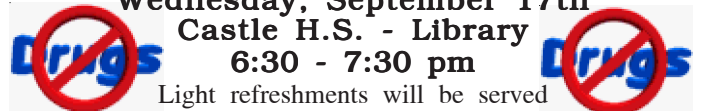
A presentation by Keith Kamita, Chief

Narcotics Enforcement Division, State of Hawaii

Wednesday, September 17th

Castle H.S. - Library

6:30 - 7:30 pm



Light refreshments will be served

This workshop is for parents, children in secondary school and the community that supports them.

To register, call KCFC at 235-7747.

Think Global, Act Local

Family Activity Night

An interactive evening of fun!

Thursday, October 2nd

6:00 - 8:00 pm

FREE

Windward Community College - Hale Akaokoa

Including activities to celebrate the Year of the Potato

How Can We Make A Difference?

Hands-on eco-friendly activities for the whole family!



R By Sept.

S 26th at

V 235-

P 7747



Family Center

Community Resource and Referral

- Phone 235-7747
- Website <http://kfcf.pachthawaii.org>

Hawaii Parental Information and Resource Center (HPIRC)

- <http://www.hawaiiiprc.org>
- Phone 235-9779

Family Center Services

- Family Support

Volunteer & Community Service Learning Opportunities

- Clerical and Program Support
- Special Event Child Care

The *Family Center News* is printed monthly by the Kaneohe Community Family Center (KCFC), a program of Parents And Children Together (PACT).

Please direct questions, comments and suggestions to:
The Kaneohe Community Family Center
46-028 Kawa St. Suite A10
Ph. 235-7747 Fax 235-7748
E-mail: kfcf@pachthawaii.org

KCFC Staff:

Christina Simmons, *Family Centers Program Director*
Cynthia Okazaki, *Site Manager*
Jolene Chang, *Administrative Assistant*
Jean Fong, *PIRC Program Specialist*
Jadine Yonemitsu, *Program Coordinator*
Jennifer Bui, *Program Coordinator*
Wanda Valencia, *Family Center Services Program Specialist*
Leilani Roth, *PIRC Assistant*
Kata Lee, *Molokai PIRC Assistant*

Grandparent's Day Sunday, Sept. 7th

It's time to celebrate grandparents! Grandparents are full of love and wisdom. Make it an occasion to talk story about family history and to update family albums. Do something special for them this month.

It is also time to recognize grandparents that find themselves raising their grandchildren. Below are support groups available to all grandparents or other relatives who are raising children.

Grandparents Raising Grandchildren Support Grp.

3rd Wednesday of every month at 9:00 am.

Caregivers Support Grp.

3rd Tuesday of every month at 5:30 pm. Includes dinner, bring your keiki.

Call Auntie Bernie at 235-7613
at Queen Liliuokalani
Children's Center
46-316 Haiku Rd., Kaneohe



Run & Read for Literacy

Sharing the love and joy of reading aloud!

SUNDAY, NOVEMBER 2, 2008

Don't miss it, a fun run for the whole family! Join us and support your Windward district schools. Celebrate reading aloud with Read To Me International and Kaneohe Community Family Center at the 6th annual Run & Read at Windward Community College. Look for the entry form coming to your schools.

Call for Volunteers

Looking for a family project? We need help with the upcoming KCFC Family Activity Night, "Think Global, Act Local." Individuals and families, get creative and provide an eco-friendly, hands on activity, an interactive demonstration or join our planning committee to share your ideas. If interested, call Jen Bui at 235-7747 for more information.



Ahuimanu Elementary



Craft & Fun Fair

Saturday, September 13th
9:00 am - 3:00 pm

Crafts, entertainment, ono food, silent auction and rides. FREE
For more information call, 239-3125.



The "Homegrown Celebration"
Saturday, September 27th
9:00 am - 9:00 pm

On the great lawn at Windward Community College

Windward Ho'olaule'a is a family-friendly community and educational event featuring:

- ♦ top-name Hawaiian entertainment
- ♦ ono ethnic food
- ♦ unique island crafts
- ♦ keiki games
- ♦ silent auction to benefit WCC programs and student scholarships



Check out the DOE website to find out how your school is doing and for calendars, programs, NCLB, etc. at <http://doe.k12.hi.us/>

September LABOR DAY

September 1, 2008

- 3rd **Town Hall Meeting**, Underage Drinking "Reunited", 5:30pm at KEY Project. Call 235-7747 for more info.
- **Oogles 'n Googles Preschool Family Night**, 6pm, Kaneohe Public Library.
- 9th **Windward Community Children's Council Monthly Meeting**, 6 - 8pm, Windward Dept. of Health Conf. Rm. Open to all parents and guardians of special needs children. 586-5370.
- 10th **Kahaluu Neighborhood Board Mtg.**, 7pm, KEY Project, 527-5749.
- 11th **Koolauloa Neighborhood Board Mtg.**, 7pm, Hauula Community Center, 527-5749.
- **Kids Hurt Too, Healing Young Hearts Support Group**, 6 - 8pm at Queen Liliuokalani Children's Center, 735-2989.
- 13th **Alzheimer's Support Group**, 10-11:30am, Kaneohe Community Family Center. Learn more about Alzheimer's and resources, 239-1552.
- 15th **Ohana Food Distribution**, 3-4:30 pm at KEY Project, Kahaluu.
- 16th **Caregivers Support Group**, provide support for families, grandparents, and relatives raising children. Queen Liliuokalani Children's Center, 5:30 - 7:30pm. Dinner will be served, bring your keiki. Call to RSVP at 235-7613.
- 17th **Grandparents Raising Grandchildren**, 9am, Queen Liliuokalani Children's Center. Call Bernie at 235-7613 for info. about this month's activities.
- 18th **Kaneohe Neighborhood Board Mtg.**, 7 pm at WCC, Hale Akoakoa, Rm. 103 - 105, call 523-4815.
- 25th **Kids Hurt Too, Healing Young Hearts Support Group**, 6 - 8pm at Queen Liliuokalani Children's Center, 735-2989.
- 27th **Internet Safety for Parents**, 9 - 11am, FREE at WCC, Hale Kuhina, Rm. 114. Call 235-7433 to register.

Parents And Children Together

From Sept. 1 - 30th, Parents And Children Together (PACT) is participating in "Give Aloha", Foodland's annual community matching gifts program.

Customers are invited to make donations to participating Hawaii non-profit organizations at checkout. Foodland and Western Union Foundation will match a portion of each donation made. At checkout, present your Maikai 'i card and inform the cashier that you would like to make a donation to PACT up to \$249. These contributions are tax deductible, save your receipts. Your donation will be added to your grocery purchase total.

PACT's registration code is 77257.



The Kaneohe Community Family Center is looking for volunteers. For further information please contact Jennifer Bui @ 235-7747.